

RICKMANSWORTH 1998 WATER SKI CLUB

HEALTH AND SAFETY POLICY

Rickmansworth Water Ski Club (RWSC), based at Batchworth Lake, Rickmansworth, considers Health and Safety to be an important and essential part in creating an enjoyable and safe experience for its members and guests.

RWSC recognises that waterskiing and wakeboarding are activities where there is a risk of personal injury or death.

Participants in these activities should be aware of and accept these risks and be responsible for their own actions and involvement.

The Committee, on behalf of the club, expects all members and guests to accept the principles of the above statement.

Whilst acknowledging these hazards, the committee of the RWSC is determined to reduce the risks associated with such hazards, as far as is reasonably practical, and as far as they are within their control.

The Committee has, therefore, drawn up the following policies:

Duty Drivers

- The Committee must approve a candidate before they can become a Duty Driver.
- Duty Drivers must have as a minimum::
 - Ski Boat Driver Award (SBDA)
 - First Aid Training
 - Criminal Records Bureau (CRB) check

Club Opening

- For the Club to be open for skiing there must be an assigned Duty Driver.
- The Duty Driver is responsible for ensuring that Health & Safety procedures are adhered to during their shift.

Boat Driving

- A skier can only be towed when the boat driver is;
 - the Duty Driver;
 - a driver under instruction. The Duty Driver must be in the boat as an observer at all times;
 - another Committee authorised driver to drive temporarily with the approval of the Duty Driver. The session's assigned Duty Driver still retains the responsibility for club operations including Health and Safety;
 - accompanied by a club member acting as an observer when a guest or visitor is being towed;
 - accompanied by a competent adult when towing a skier or wakeboarder that is under the age of 18;

RICKMANSWORTH 1998 WATER SKI CLUB

HEALTH AND SAFETY POLICY

- equipped with a mobile telephone when there is only one skier and no other members are at the club.
- Skiers should use and learn the British Waterski and Wakeboard Federation (BWBF) approved signals. These are to be posted on the club notice board.
- No one shall use the lake under the influence of excess drugs or alcohol.

First Aid

- There will be a First Aid box available to all who use the club. There will also be an accompanying accident reporting book.
- All RWSC boat drivers will be First Aid trained and will renew any lapsed qualifications, at a suitable date.

General Safe Practices

- A skier in the water must not be taken aboard without first turning off the engine of the boat.
- If a skier has dropped a ski and then fallen, the skier must be picked up prior to the ski.
- The driver shall return the boat to the RWSC dock, at maximum of 3 mph.
- All dogs visiting the site must be kept on a lead or under control and their mess cleared up. The owner must take full responsibility for their dog at all times.
- RWSC does not guarantee the quality of the decking facilities provided for its customers, although every effort will be made to ensure the safety of the facilities in use by our members and guests.
- Any areas within the Club domain that pose any Health and Safety issues shall be dealt with immediately.
- Under no circumstances will swimming be permitted in the lake around the ski club dock.
- All Skiers/Wakeboarders and other users of the water facilities, MUST inform the RWSC duty driver of any illness, injuries and/or heart conditions prior to skiing.
- In accordance with the British Water Ski and Wakeboard Federation Personal Floatation Devices (PFDs) must be worn by all skiers and wakeboarders but it is at the skier's option for trick skiing.
- It is the responsibility of the member/driver to inform all guests of the rules and regulations for RWSC. If the guest does not agree to these rules and regulations they have no right to use the facilities on the site
- All Members and their guests use the facilities at the site at their own risk. RWSC makes no warranties as to the safety of these Health and Safety rules or the lake.

RICKMANSWORTH 1998 WATER SKI CLUB

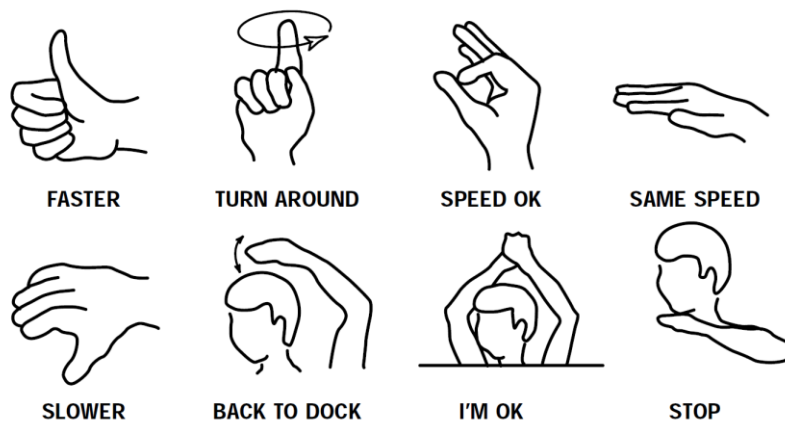
HEALTH AND SAFETY POLICY

- RWSC shall not be liable for any injury or any other loss whatsoever arising out of the use by a member or his guest of the facilities at the site unless such injury or loss is as a result of gross negligence by RWSC Members or drivers.

These Health and Safety Rules have been complied and implemented to ensure the maximum enjoyment of the clubs facilities to its members, guests and the general public. If there is anything you do not understand or have difficulty in interpreting, please do not hesitate to ask the RWSC duty driver or a Committee member.

Standard Ski Signals

Drivers, skiers and observers must all know and understand the visual signals given in British Water Ski and Wakeboard Federation (BWVF) approved manual together with the standard aural signals of "in gear" and "hit it".



Signed

Malcolm Stirling, RWSC Chairman

1st May 2012